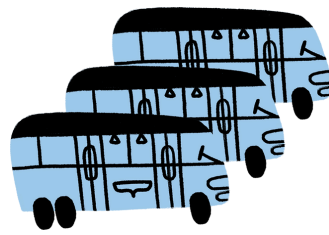


# What does compulsory education mean?

Compulsory education means that you must study until you turn 18, unless you complete an upper secondary vocational qualification or the matriculation examination before that.

As a person of compulsory education age, you must apply for upper secondary education or other education for those of compulsory education age after completing comprehensive school. The City of Helsinki supervises that you complete your compulsory education.

You can participate in upper secondary education at a general upper secondary school ('lukio') or vocational institution ('ammattikoulu').



## Is education free of charge?

If you are of compulsory education age, upper secondary education is free of charge for you. This means that you are provided with textbooks and other necessary supplies free of charge.

Those of compulsory education age who regularly travel over 7 kilometres to and from school can also receive a school transport subsidy from Kela.



## Compulsory education

What do I need to know about it?

**Helsinki**

# What if I do not have a study place?

If you are not granted a study place in the spring joint application round or you do not have a student place for some other reason, you must apply for a study place in the continuous application process. The continuous application process is open all year round, but the application times for different qualifications vary.

You can follow the education and training programmes added to the continuous application process on the websites of educational institutions or on the Studyinfo service.

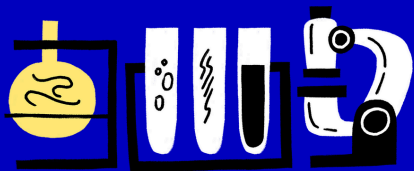


Illustration: Lille Santanen

**If you can't find a study place, the City of Helsinki will assign you a place. If you have basic Finnish skills, you can study in the TUVVA programme, where you can:**



... improve your Finnish language skills for studying, study skills or life management skills



... raise your comprehensive school grades



... complete specific general upper secondary school or vocational education and training studies.

# Where can I find more information?

If you are already enrolled in an educational institution, the guidance counsellor of your educational institution will help you find a suitable place for further studies. If you do not have a study place, the City of Helsinki's compulsory education team is responsible for providing you with guidance for further studies.

Contact the compulsory education team by email at [oppivelvollisuustiimi@hel.fi](mailto:oppivelvollisuustiimi@hel.fi).

